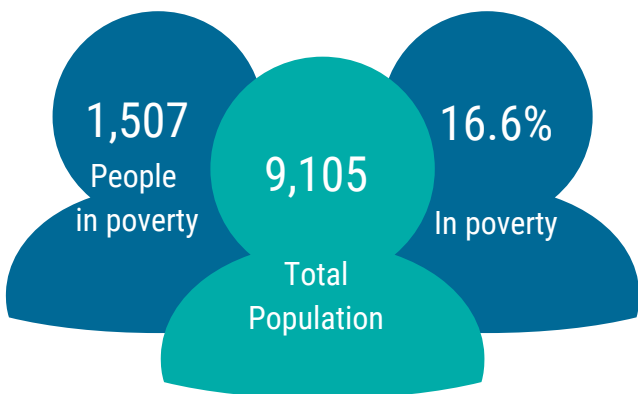


MONTMORENCY COUNTY

DATA SNAPSHOT



Households in Poverty

640

A.L.I.C.E. Households

1,368

Median Age

56.0



8.0%

Unemployed Population

Median Rent Per Month

\$668

Median Home Value

\$102,700

% of Occupied Units by
Renters

15.9%

Median Household Income

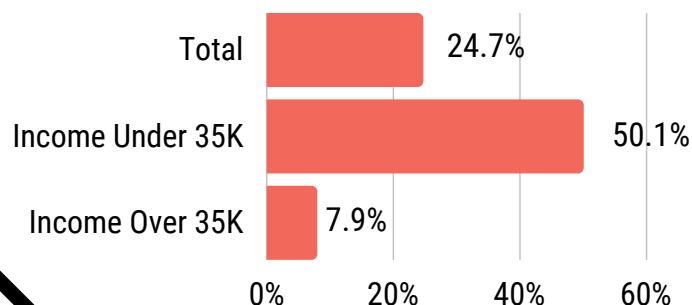
Montmorency County

\$41,772

State of Michigan

\$57,144

People Spending More Than 30% of Income
on Housing



Ratio of children per
licensed childcare
opening.

22:1

Children references individuals under
the age of 9.

RATIO OF PEOPLE PER M.D.

1,556:1

TOP 3 INDUSTRIES

1. Services
2. Retail Trade
3. Manufacturing